

An aerial photograph of a city, likely Victoria, British Columbia, showing a mix of residential and commercial areas. In the background, there are large mountains under a blue sky with scattered clouds. A semi-transparent dark horizontal band is overlaid across the middle of the image, containing the title and subtitle in white text. The city below shows various buildings, parking lots, and roads, with some trees in the foreground.

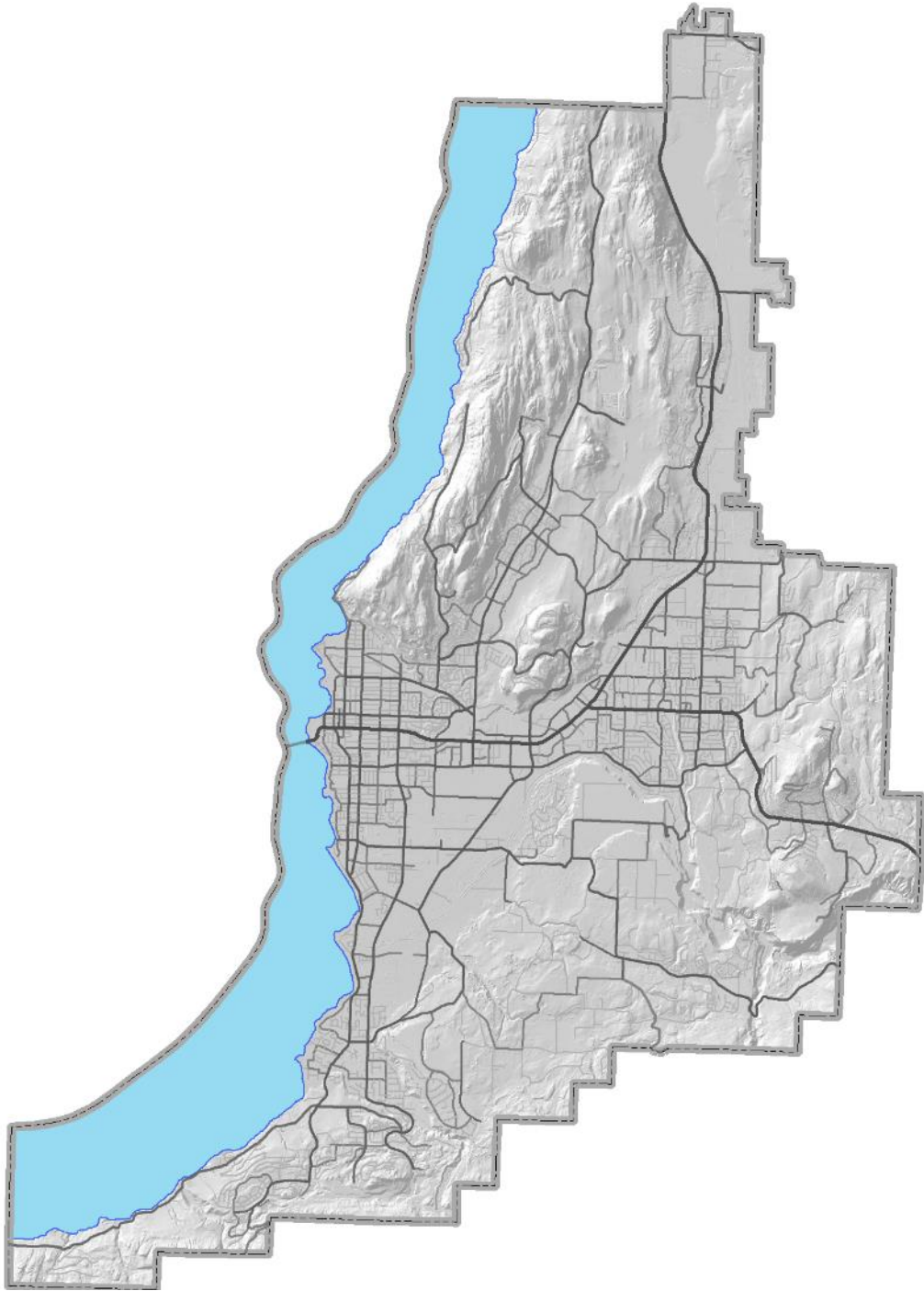
The Traffic Bowl

Transportation Impacts of Hillside Sprawl

Kelowna, BC



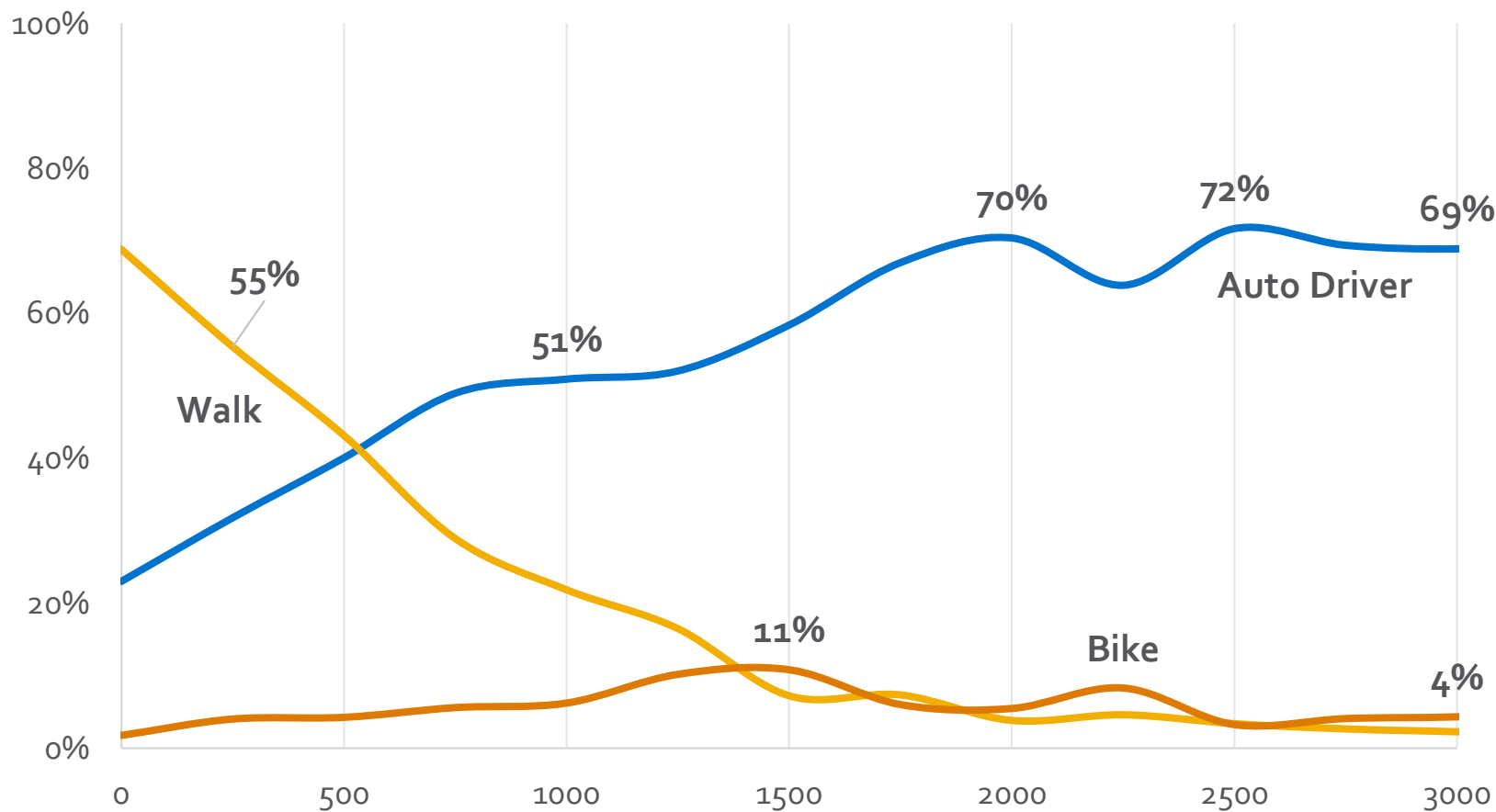
~20km



Setting Goals

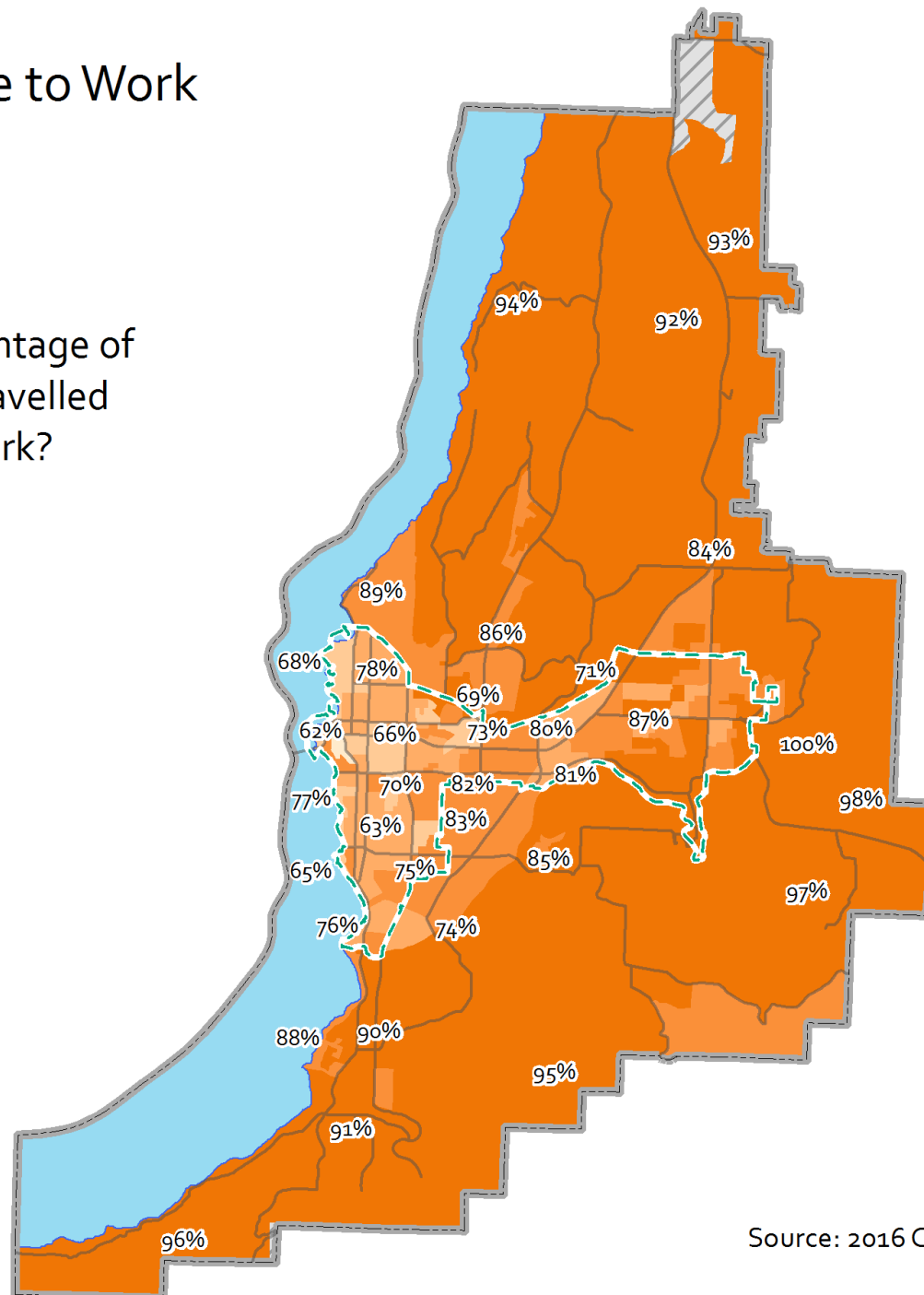
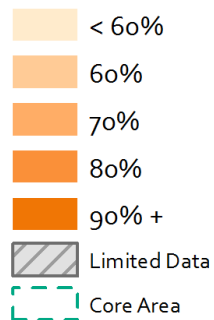


All About Distance



Commute to Work

What percentage of residents travelled by car to work?



Source: 2016 Census

Hillside Neighbourhoods



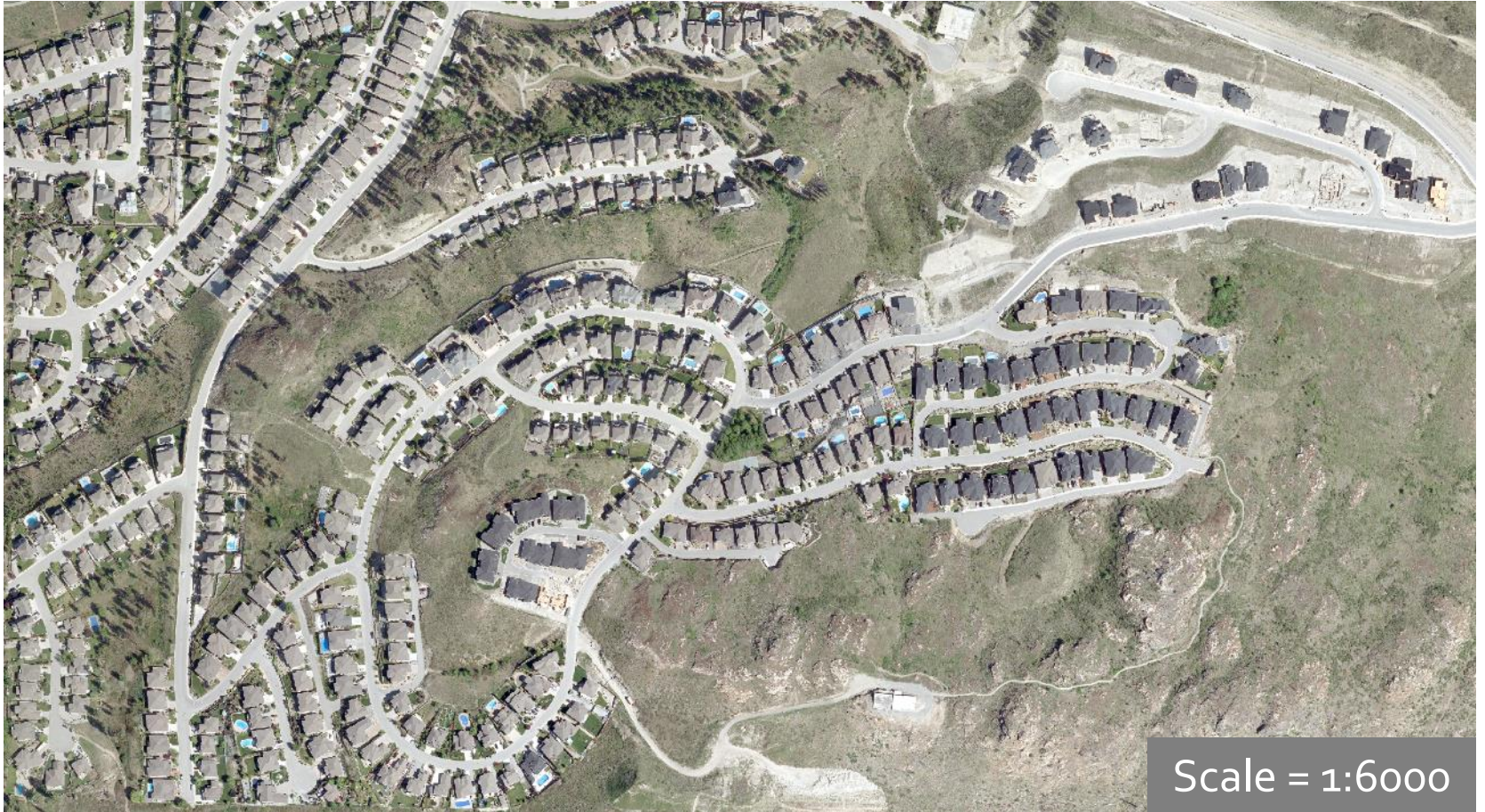
Hillside Neighbourhoods



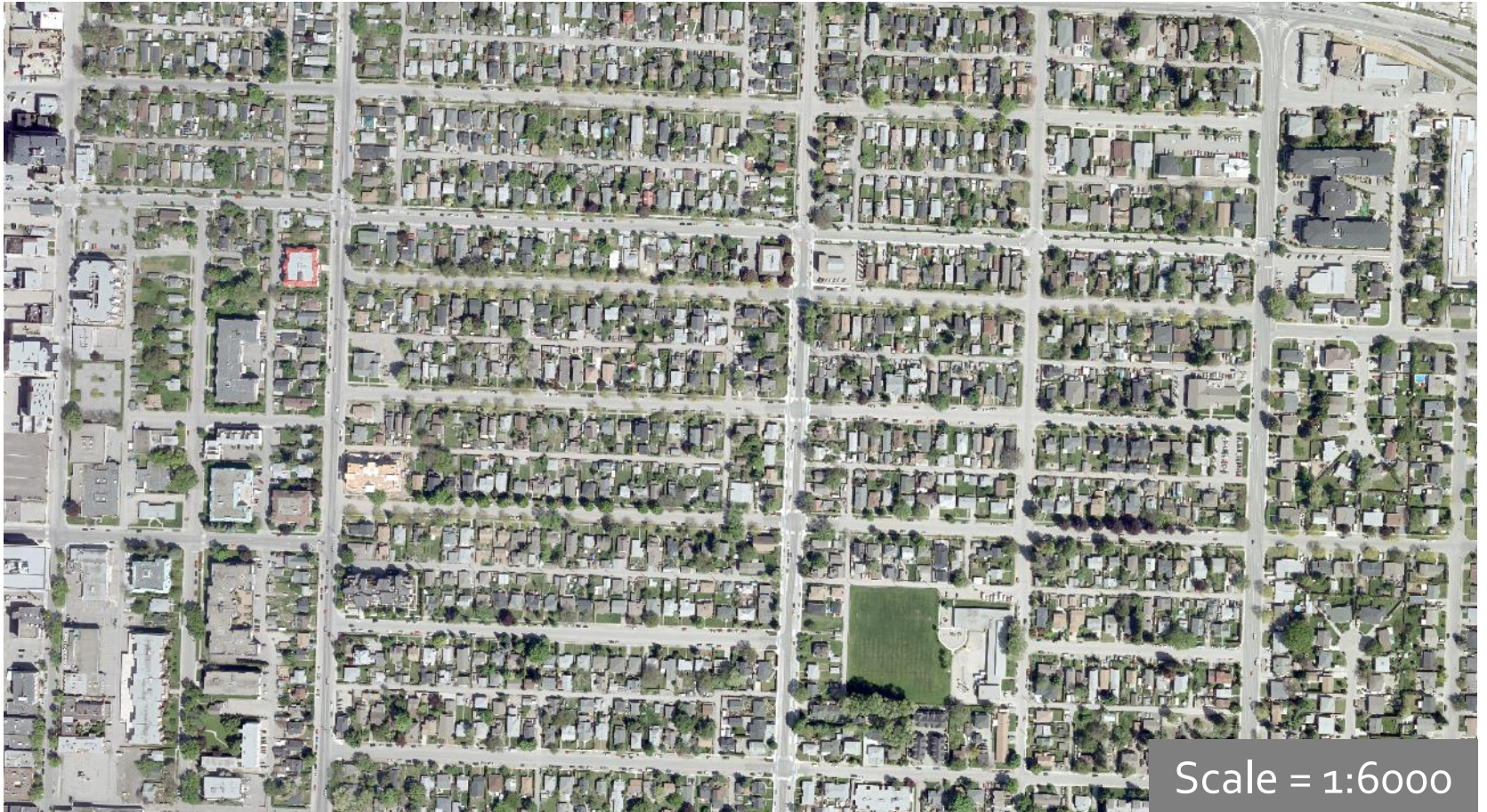
Infrastructure Everywhere



Transit Service



Transit Service



Scale = 1:6000

The Hillside Village



The Peak Matters

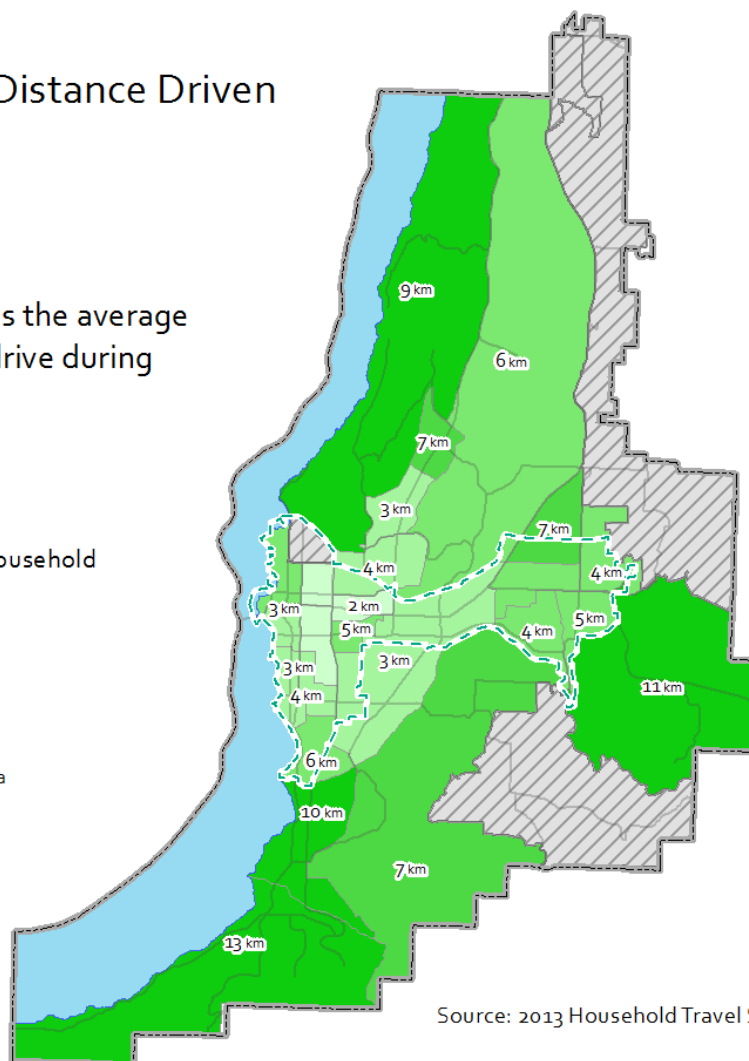
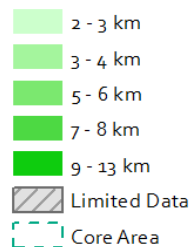


Distance Travelled in Peak

Average Distance Driven

How far does the average household drive during peak hours?

Distance Per Household



Source: 2013 Household Travel Survey

Downstream Impacts



Downstream Impacts



Downstream Impacts



The Hourglass



The Traffic Bowl



The Traffic Bowl

